



1. **G from G Major Scale, 2015**
acrylic on canvas, 60 X 48 inches
\$2,400



2, 3, 4, 5, 6, 7, 8. **G Major Scale (A, B, C, D, E F#, G8), 2015**
acrylic on canvas, 60 X 48 inches
\$2,400 each



9 and 10. **Pastel Finale 1 & 2, 2015**
acrylic on canvas, 29 X 18 inches



SUZANNE
SUNSHINE

edges of light

\$900 each

55 central park west, apt. 7d
new york, ny 10023
212-496-1429
suzanne@sunshineassoc.com
www.suzannesunshine.com



11 and 12. ***Iris Encore 1 and 2***, 2015
acrylic on canvas 30 X 15 Inches
\$900 each



13. ***New Canaan Symphony***, 2015
acrylic on canvas, 60 X 48 inches
\$2,400



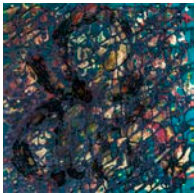
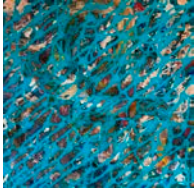
14. ***Nantucket Notes***, 2015
acrylic on canvas, 60 X 48 inches
\$2,400



SUZANNE
SUNSHINE

edges of light

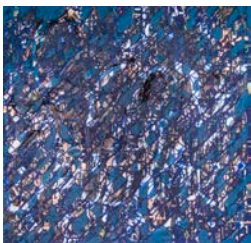
55 central park west, apt. 7d
new york, ny 10023
212-496-1429
suzanne@sunshineassoc.com
www.suzannesunshine.com



15, 16, 17. **True Blue 1, 2, 3**, 2015
acrylic on canvas, 18 X 18 inches
\$500 each



18. **I Am Equal** 2015
acrylic on canvas, 36 x 36 inches
\$1,750



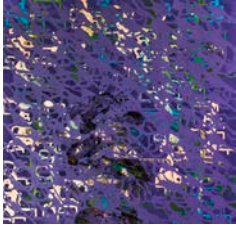
19. **50 Shades of Blue**, 2015
acrylic on canvas, 36 x 36 inches
\$1,750



SUZANNE
SUNSHINE

edges of light

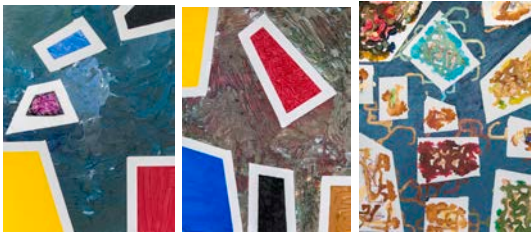
55 central park west, apt. 7d
new york, ny 10023
212-496-1429
suzanne@sunshineassoc.com
www.suzannesunshine.com



20. **Agave**, 2015
acrylic on canvas, 24 x 24 inches
\$900



21, 22, 23, 24. **Haydn Sonata 1, 2, 3, 4**, 2015
acrylic on canvas, 14 x 14 inches
\$400 each



25, 26, 27. **Etude A, B, C**, 2015
acrylic on canvas, 16 x 12 inches each
\$400 each



28, 29. **I Am 1 and 2**, 2015
acrylic on canvas, 12 x 12 inches
\$350 each



30. ***I Am Here***, 2015
painting in space, 19.5 x 19 x 3 inches
\$1,200



31. ***Story of Gray***, 2015
painting in space 17 x 24 x 3 inches
\$1,200



55 central park west, apt. 7d
new york, ny 10023
212-496-1429
suzanne@sunshineassoc.com
www.suzannesunshine.com



Artist Statement

My paintings utilize an edge as a starting point - of light, of sound, and of touch - in our daily lives. Moving within and around the edge, my brushstrokes explore the delicate relationship of color and line within the confines of the canvas. Informed by a passion for intelligent risk-taking in both my painting process and daily life, my work conveys deep emotion bounded by awareness.

Bio

While pursuing an undergraduate degree in International Relations at Brown University, Suzanne researched and wrote catalogue entries for "Flying Tigers: Abstract Expressionist Painting and Sculpture in New York 1939-1946" on paintings by Richard Pousette-Dart and Ad Reinhardt as well as on the Sculptures of Peter Grippe and David Hare.

Suzanne was the recipient of a Rhode Island Committee of the Humanities grant that was utilized to produce a short documentary film about the origins of Abstract Expressionism during WWII. Subsequent to that, Suzanne became Assistant Art Curator to develop the mixed use skyscraper Equitable Center at 787 7th Avenue in Manhattan. The curators commissioned artwork and coordinated the collaboration between the architects, designers, artists, and sculptors -- such as Edward Larabee Barnes, Skidmore Owens & Merrill, Massimo Vignelli, Roy Lichtenstein, Sandro Chia, Sol Lewitt, Barry Flanagan, and Scott Burton. They also brought the Whitney Museum in as their partner as well as restored a Thomas Hart Benton mural "*American Today*" for its lobby.

Suzanne has had over a 30-year career in the nonprofit sector and as a commercial real estate broker for NYC nonprofits, including museums, galleries, educational, health, and social service organizations. Suzanne began studying at the Art Students League in 1994 with Bruce Dorfman and continues today as a member. Suzanne lives in Manhattan with her husband and teenage daughter and son.